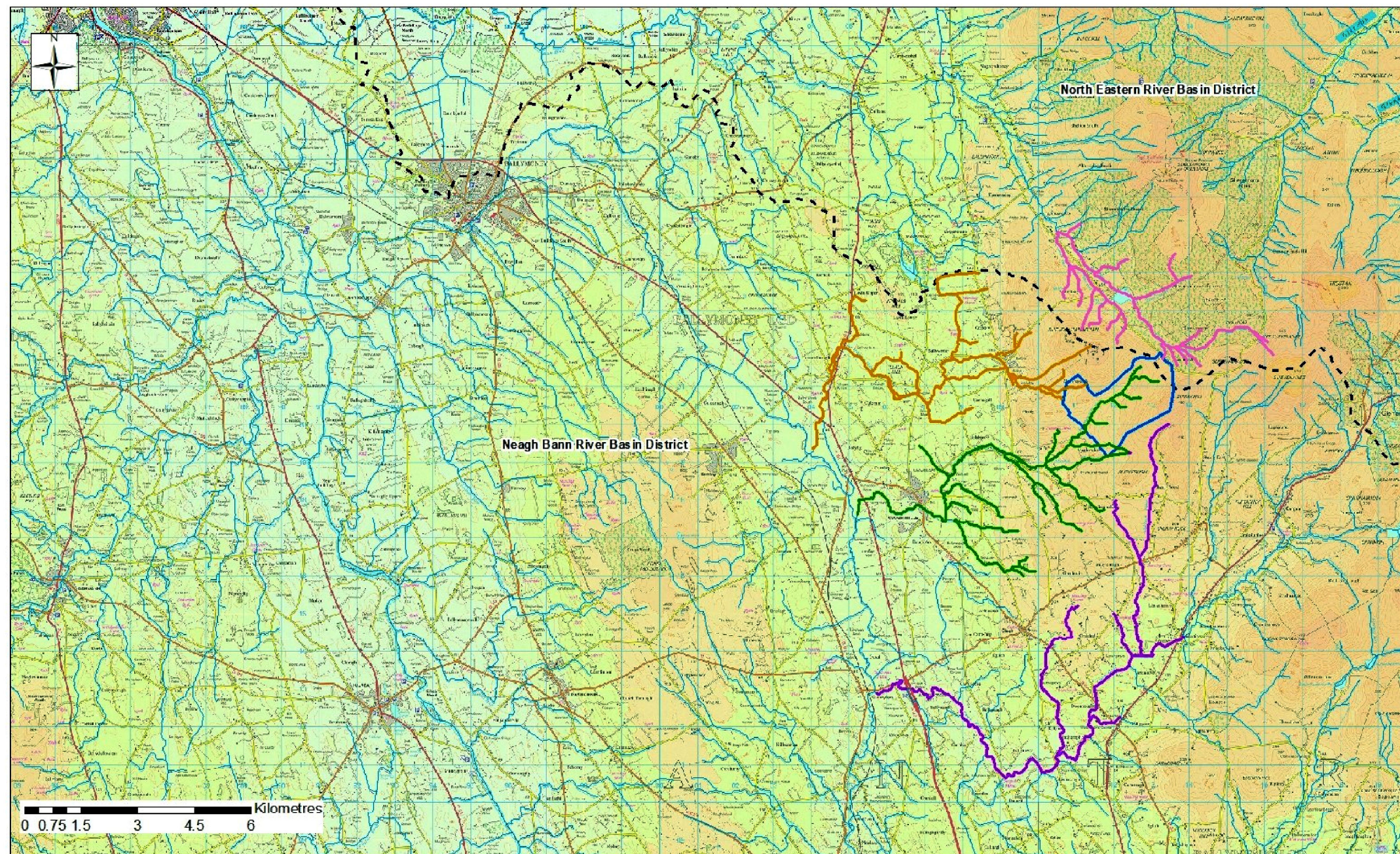


**FIGURE 9.1
OVERVIEW OF SITE
LOCATION IN RELATION
TO KEY RIVER
CATCHMENTS**

© CROWN COPYRIGHT, ALL RIGHTS RESERVED.
2022 LICENCE NUMBER 242.



- Preliminary Site Boundary
- Tullykittagh/ Clogh River
- Upper River Bush/ Fisk Burn
- Aghanageeragh River (Cloghmills Water)
- Killagan River
- Boundary of North Eastern & Neagh Bann River Basin Districts

Figure 9.1: Overview of site location in relation to key river catchments



LAYOUT DWG: N/A | T-LAYOUT NO.: N/A

DRAWING NUMBER
03090-RES-LAY-DR-TE-022

SCALE AS SHOWN

**ENVIRONMENTAL STATEMENT &
PLANNING APPLICATION 2022**

THIS DRAWING IS THE PROPERTY OF RENEWABLE ENERGY SYSTEMS LTD. AND NO REPRODUCTION MAY BE MADE IN WHOLE OR IN PART WITHOUT PERMISSION