

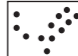





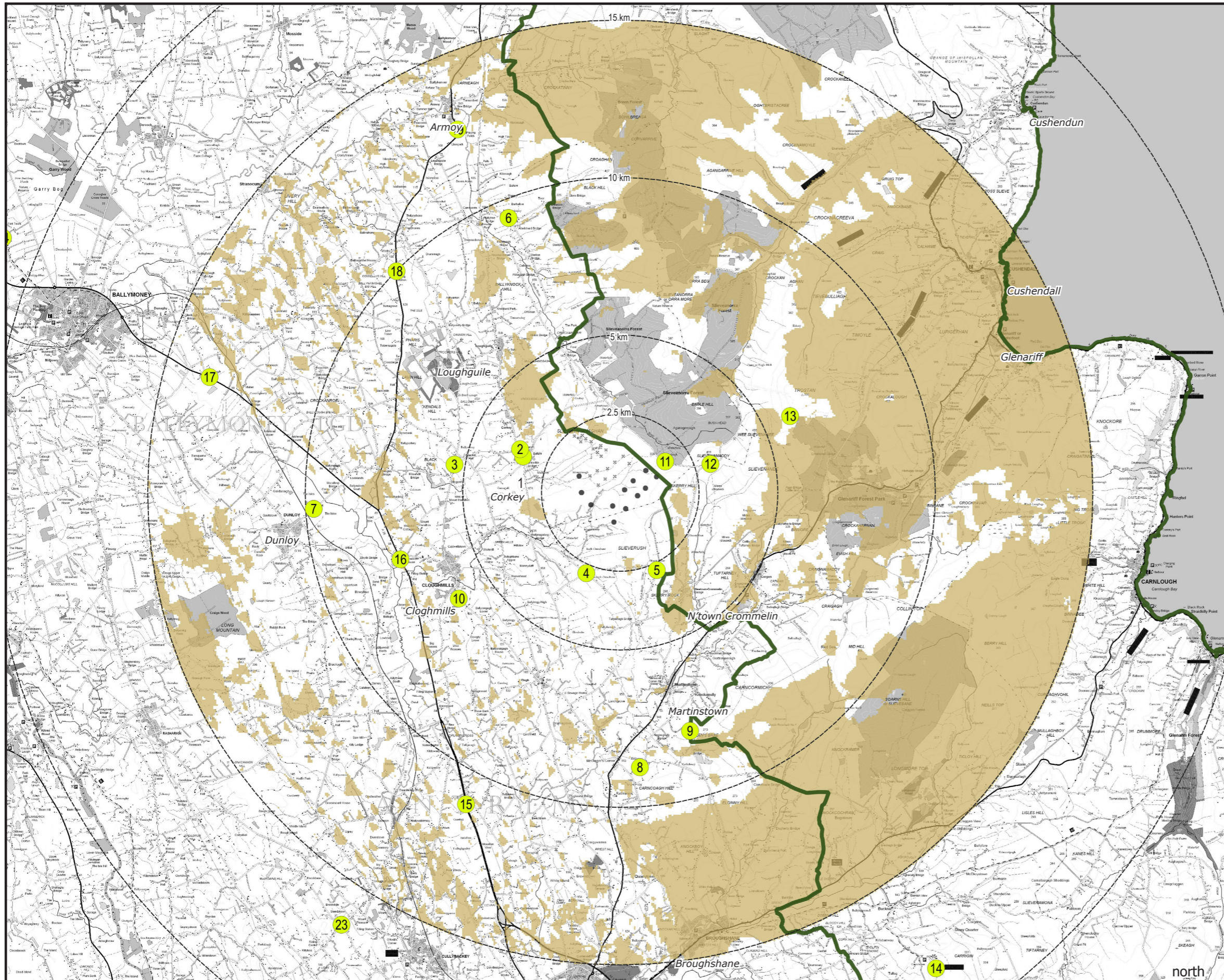
CARNBUCK WIND FARM

Figure 4.8 (page 1 of 2)

Reverse Zone of Theoretical Visibility 15 km radius, blade tip height

KEY

-  Carnbuck proposed turbines
 -  LVIA Viewpoint Locations (detailed in Figure 4.3)
 -  Antrim Coast and Glens Area of Outstanding Natural Beauty
 -  Parts of Study Area with no visibility of Proposed Development: 42.52 %
- Percentage of total AONB with no visibility of the Proposed Development: 86.62 %



NOTES:

Turbine dimensions illustrated for Carnbuck: 180 m max. tip height above ground level; 138 m rotor diameter; 111 m hub height

This Figure must be viewed in conjunction with the analysis of landscape and visual effects contained in Chapter 4 of the Environmental Statement and the detailed methodology for the preparation of visualisations contained in Technical Appendix 4.2.

Shanti McAllister
landscape planning
and design ltd.

LANDSCAPE AND VISUAL IMPACT ASSESSMENT

DRAWN / APPROVED: SMc / FS	DATE: July 2022	SCALE & PRINT SIZE: 1:250,000 @ A3	REVISION: A
TURBINE LAYOUT NO: pNIRgrx047		0 5km	



THIS DRAWING IS THE PROPERTY OF RENEWABLE ENERGY SYSTEMS LTD. AND NO REPRODUCTION MAY BE MADE IN WHOLE OR IN PART WITHOUT PERMISSION