



### CARBUCK WIND FARM

Figure 4.7 (page 2 of 2)

### Zone of Theoretical Visibility 30 km radius, blade tip height

#### KEY

Carnuck proposed turbines

LVIA Viewpoint Locations (detailed in Figure 4.3)

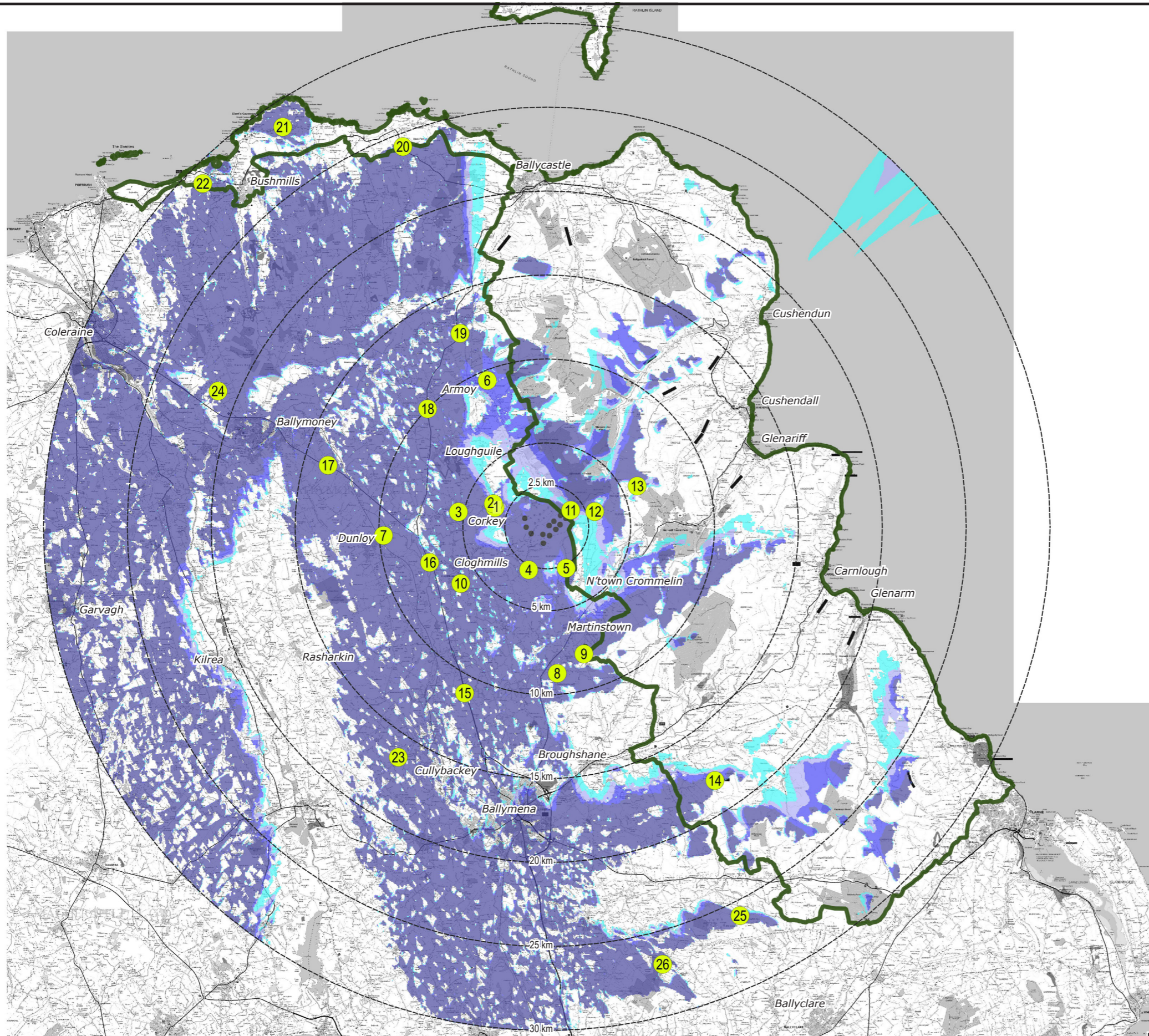
Zone of Theoretical Visibility of:

- 1 - 3 turbines across 3.45 % of Study Area
- 4 - 6 turbines across 2.23 % of Study Area
- 7 - 9 turbines across 3.00 % of Study Area
- 10 - 12 turbines across 32.09 % of Study Area

Total area with theoretical visibility of at least 1 blade tip: 40.77 %

Areas with no visibility are unshaded: 59.23 %

Areas of Outstanding Natural Beauty  
Percentage of total AONBs with theoretical blade tip visibility: 21.37 %



#### NOTES:

Turbine dimensions illustrated for Carnuck: 180 m max. tip height above ground level; 138 m rotor diameter; 111 m hub height

This Figure must be viewed in conjunction with the analysis of landscape and visual effects contained in Chapter 4 of the Environmental Statement and the detailed methodology for the preparation of visualisations contained in Technical Appendix 4.2.



Shanti McAllister  
landscape planning  
and design ltd.

#### LANDSCAPE AND VISUAL IMPACT ASSESSMENT

DRAWN / APPROVED: SMc / FS	DATE: July 2022	SCALE & PRINT SIZE: 1:250,000 @ A3	REVISION: C
TURBINE LAYOUT NO: pNIRgrx047		0 5 10km	

THIS DRAWING IS THE PROPERTY OF RENEWABLE ENERGY SYSTEMS LTD. AND NO REPRODUCTION MAY BE MADE IN WHOLE OR IN PART WITHOUT PERMISSION