










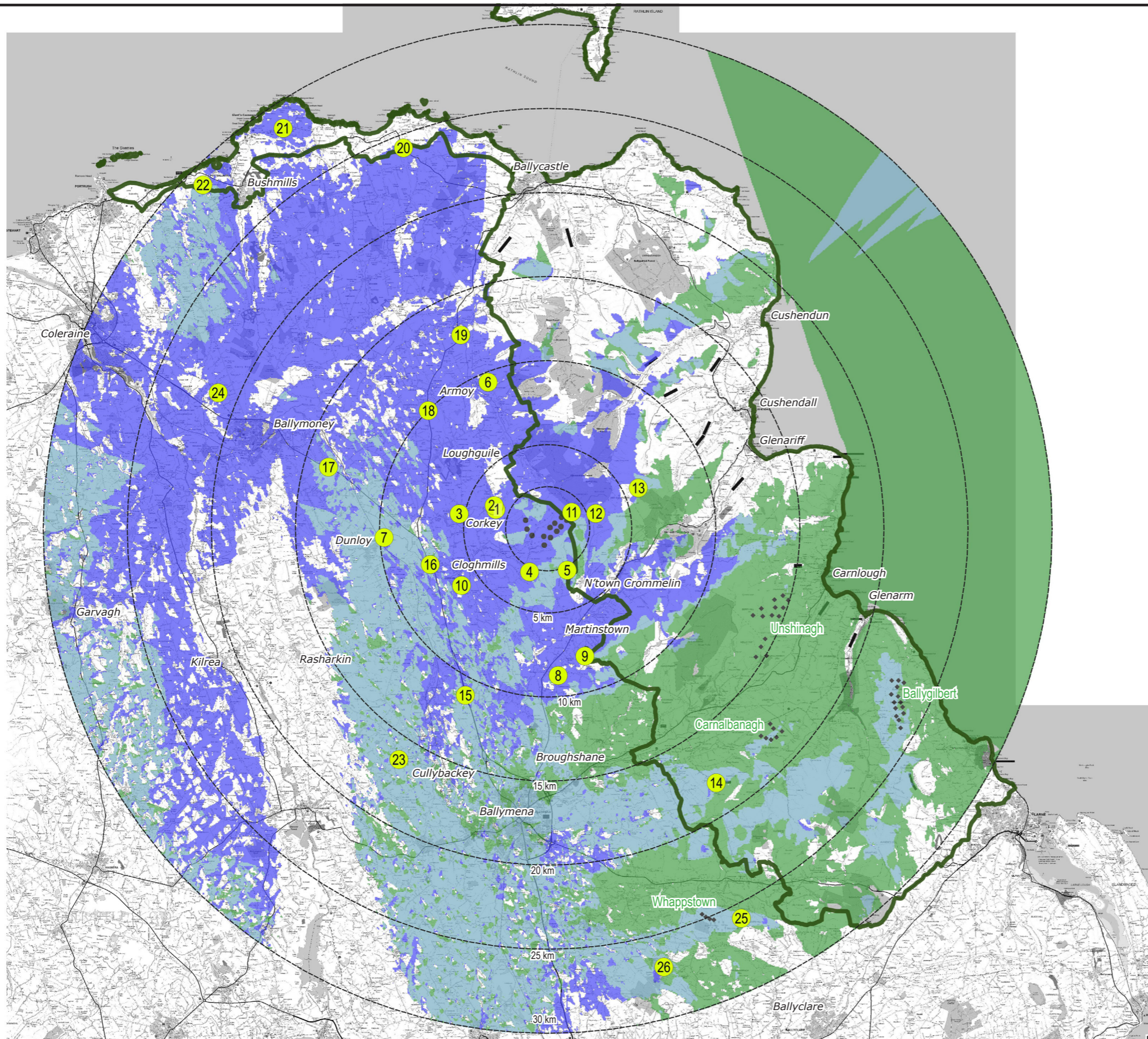
CARBUCK WIND FARM

Figure 4.9 (page 3 of 3)

Cumulative Zone of Theoretical Visibility: Proposed Wind Farms* 30 km radius, blade tip height

KEY

-  Carnuck proposed turbines
-  LVIA Viewpoint Locations (detailed in Figure 4.3)
-  Proposed wind farms (detailed in Figure 4.4)
- Zone of Theoretical Visibility of:
 -  Proposed wind farms* where Carnuck would not be visible: 28.61 %
 -  Carnuck where there is already visibility of other wind farms: 16.96 %
 - Total area with theoretical visibility of other wind farms: 45.57 %
 -  Additional visibility of Carnuck where there is no visibility of other wind farms: 23.81%
 - Total area within 30 km with theoretical visibility of Carnuck: 40.77%
 - Parts of Study Area with no visibility of any wind farms are unshaded: 30.62 %
-  Areas of Outstanding Natural Beauty



NOTES:

Turbine dimensions illustrated for Carnuck: 180 m max. tip height above ground level; 138 m rotor diameter; 111 m hub height
 * Other wind farms in this ZTV illustration include 4 no. proposed wind farms which are detailed in Technical Appendix 4.5.
 This Figure must be viewed in conjunction with the analysis of landscape and visual effects contained in Chapter 4 of the Environmental Statement and the detailed methodology for the preparation of visualisations contained in Technical Appendix 4.2.

Shanti McAllister
 landscape planning
 and design ltd.

**LANDSCAPE AND VISUAL
 IMPACT ASSESSMENT**

DRAWN / APPROVED: SMc / FS	DATE: July 2022	SCALE & PRINT SIZE: 1:250,000 @ A3	REVISION: A
TURBINE LAYOUT NO: pNIRgrx047		0 5 10km	

THIS DRAWING IS THE PROPERTY OF RENEWABLE ENERGY SYSTEMS LTD. AND NO REPRODUCTION MAY BE MADE IN WHOLE OR IN PART WITHOUT PERMISSION