



CARBUCK WIND FARM

Figure 4.6 (page 1 of 2)

Zone of Theoretical Visibility 15 km radius, hub height

KEY

Carnbuck proposed turbines

LVIA Viewpoint Locations (detailed in Figure 4.3)

Zone of Theoretical Visibility of:

- 1 - 3 turbines across 6.99 % of Study Area
- 4 - 6 turbines across 7.52 % of Study Area
- 7 - 9 turbines across 8.32 % of Study Area
- 10 - 12 turbines across 26.92 % of Study Area

Total area with theoretical visibility of at least 1 hub: 49.75 %

Areas with no visibility are unshaded: 50.25 %

Antrim Coast and Glens Area of Outstanding Natural Beauty

Percentage of total AONB with theoretical hub height visibility: 9.55 %

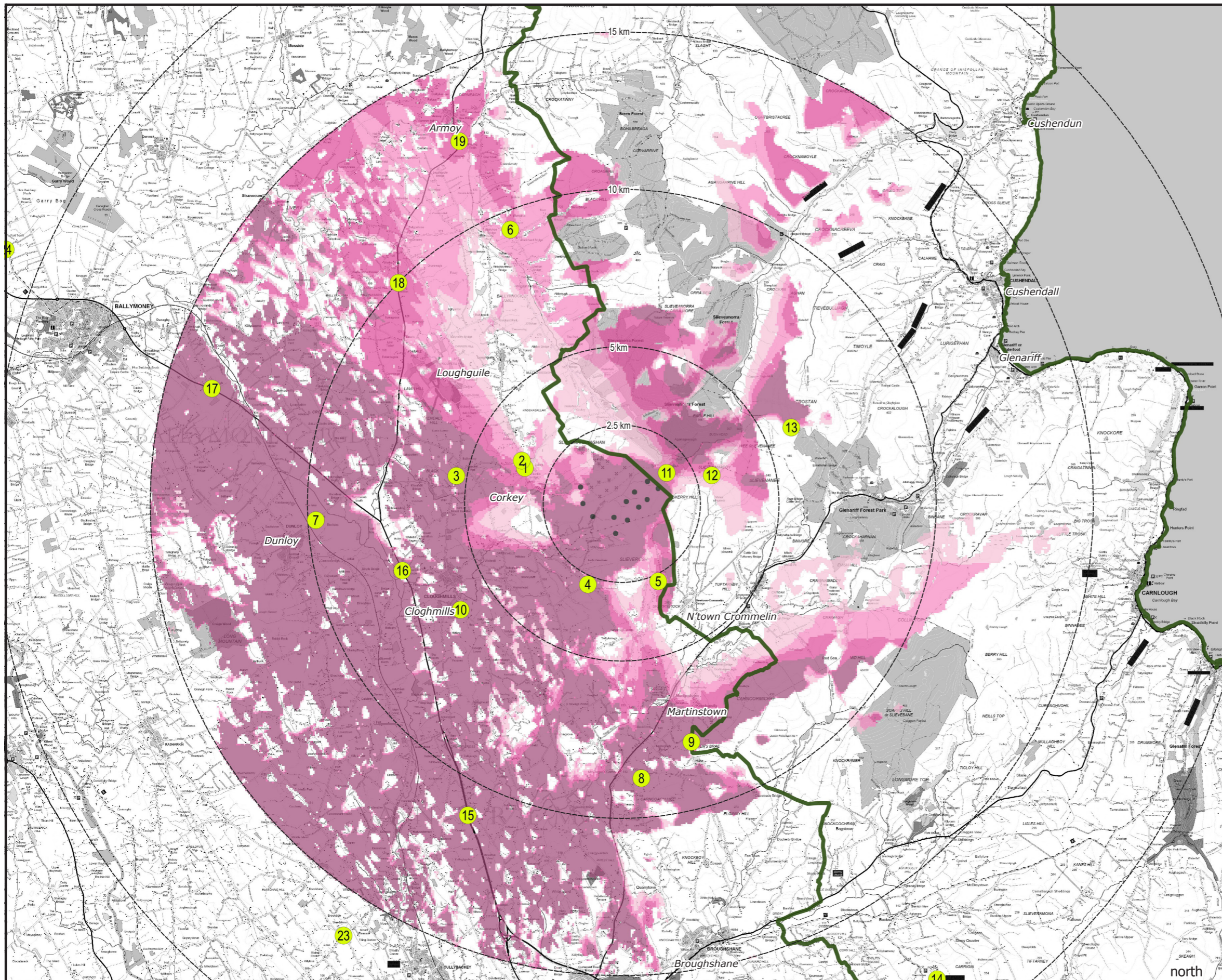
Shanti McAllister
landscape planning
and design ltd.

LANDSCAPE AND VISUAL IMPACT ASSESSMENT

DRAWN / APPROVED: SMc / FS	DATE: July 2022	SCALE & PRINT SIZE: 1:125,000 @ A3	REVISION: A
-------------------------------	--------------------	---------------------------------------	----------------

TURBINE LAYOUT NO: pNIRgrx047	0	5km
----------------------------------	---	-----

THIS DRAWING IS THE PROPERTY OF RENEWABLE ENERGY SYSTEMS LTD. AND NO REPRODUCTION MAY BE MADE IN WHOLE OR IN PART WITHOUT PERMISSION



NOTES:

Turbine dimensions illustrated for Carnbuck: 180 m max. tip height above ground level; 138 m rotor diameter; 111 m hub height

This Figure must be viewed in conjunction with the analysis of landscape and visual effects contained in Chapter 4 of the Environmental Statement and the detailed methodology for the preparation of visualisations contained in Technical Appendix 4.2.