



### CARBUCK WIND FARM

Figure 4.6 (page 2 of 2)

### Zone of Theoretical Visibility 15 km radius, blade tip height

#### KEY

Carnbuck proposed turbines

LVIA Viewpoint Locations (detailed in Figure 4.3)

Zone of Theoretical Visibility of:

- 1 - 3 turbines across 4.99 % of Study Area
- 4 - 6 turbines across 4.07 % of Study Area
- 7 - 9 turbines across 5.84 % of Study Area
- 10 - 12 turbines across 42.58 % of Study Area

Total area with theoretical visibility of at least 1 blade tip: 57.48 %

Areas with no visibility are unshaded: 42.52 %

Antrim Coast and Glens Area of Outstanding Natural Beauty

Percentage of total AONB with theoretical blade tip visibility: 13.38 %

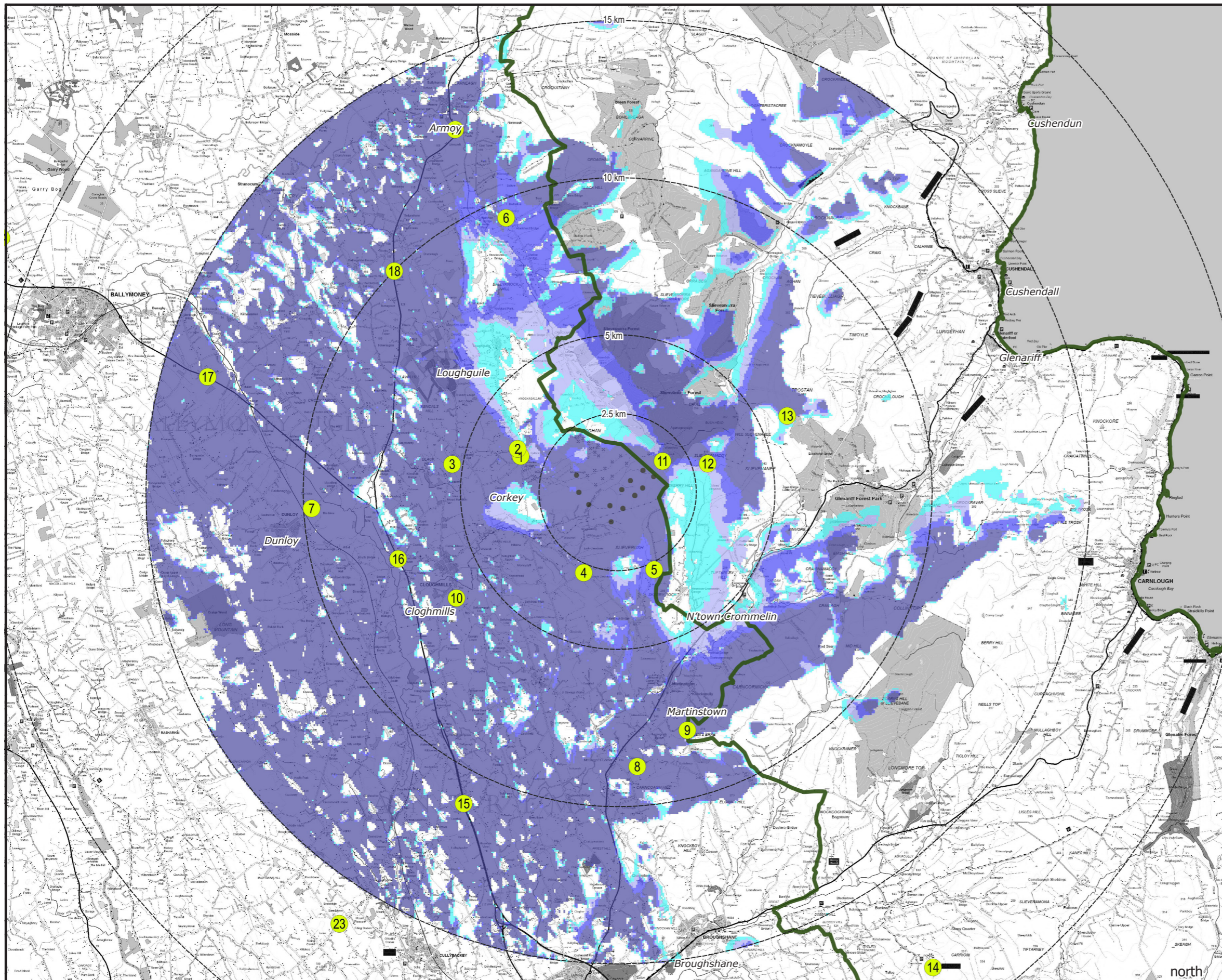
Shanti McAllister  
landscape planning  
and design ltd.

#### LANDSCAPE AND VISUAL IMPACT ASSESSMENT

DRAWN / APPROVED: SMc / FS	DATE: July 2022	SCALE & PRINT SIZE: 1:125,000 @ A3	REVISION: A
-------------------------------	--------------------	---------------------------------------	----------------

TURBINE LAYOUT NO: pNIRgrx047	0	5km
----------------------------------	---	-----

THIS DRAWING IS THE PROPERTY OF RENEWABLE ENERGY SYSTEMS LTD. AND NO REPRODUCTION MAY BE MADE IN WHOLE OR IN PART WITHOUT PERMISSION



#### NOTES:

Turbine dimensions illustrated for Carnbuck: 180 m max. tip height above ground level; 138 m rotor diameter; 111 m hub height

This Figure must be viewed in conjunction with the analysis of landscape and visual effects contained in Chapter 4 of the Environmental Statement and the detailed methodology for the preparation of visualisations contained in Technical Appendix 4.2.